



# Ellerton Grange Barns

This PDF has been downloaded from [www.ellertongrangebarns.com](http://www.ellertongrangebarns.com)

## 'WEST BARN'

Two storey stone built construction 131m<sup>2</sup>

Convert to 3 bedroomed dwelling 2 en-suite and family bathroom.

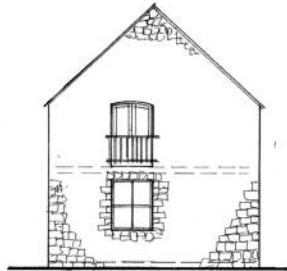
Farmhouse type kitchen and utility, lounge /diner/ good sized hall

Finish to include fully tiled kitchen granite or marble surfaces and bathrooms with limestone or slate floors, all other ground floor areas to be fitted with underfloor heating and oak floors, doors and staircases.

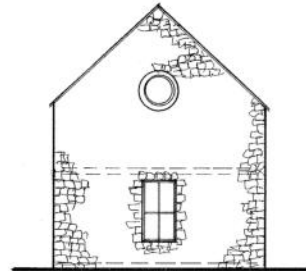


Estimated market value on completion 2014

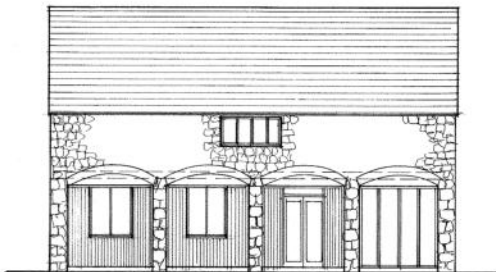
£370,000



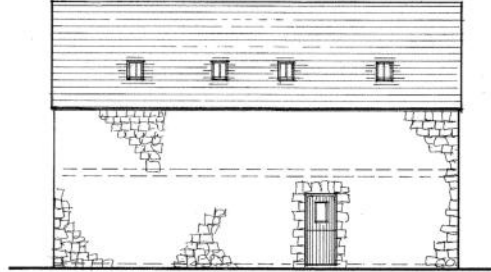
South Elevation



North Elevation



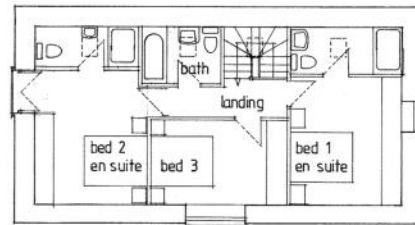
East Elevation



West Elevation



Ground Floor Level



First Floor Level

It is our intention upon development to omit many of the final finishes –these will include tiles to floors and walls – kitchen door designs these can be viewed at our proposed show property which will be "The West Barn" our clients will be invited to take part in the final choice of these finishes that will already be budgeted in the sale prices.

West Barn – Barn 7

# Premiership

Premiership Town & Country Developments Ltd

The Old Custom House 74 Lower Dock Street NEWPORT, S.Wales NP20 1EH

t: 01633 240206 f: 01633 840360 m: 07770 947171

e: [info@premiershiptownandcountrydevelopmentsltd.com](mailto:info@premiershiptownandcountrydevelopmentsltd.com)

w: [premiershiptownandcountrydevelopmentsltd.com](http://premiershiptownandcountrydevelopmentsltd.com)

# PDF

our agents



T 01952 822898  
F 01952 822893  
79 High Street,  
Newport Shropshire  
TF10 7AU

[www.fodenproperty.com](http://www.fodenproperty.com)  
[info@fodenproperty.com](mailto:info@fodenproperty.com)